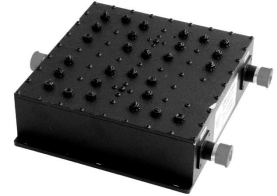


2G+3G/WIFI Tri-Band Coupler for 2G+3G and WIFI

This tri-band coupler is specially designed to combine 2G and 3G combined cellular RF signals with WIFI RF signals. high isolation between cellular and WIFI stops particular WIFI RF signals to be mixed or interfered by other WIFI RF signals that connect to same network.

Unit uses modern filter technology design to achieve very low insertion loss and high match performance. This will be great help to the combined WIFI system data transmission performance



Part No.	CBC820-2500-3N
Frequeny Range	Low band: 820~ 960 MHz 1710~ 2170 MHz High Band: 2500~2700 MHz
Insertion Loss	< 0.3dB (820-2170 MHz) < 0.5dB (2400-2500 MHz)
Flatness	≤ 0.5dB
Out Band Rejection	Low Band ≥ 75dB@2400 MHz High Band ≥ 78dB@2170MHz
Input Power	≥ 100W
Operating Temperature	-25 ~ +60°C
Port	N(f)
Height	28 mm
Width	92 mm
Length	185 mm
Weight	1.4kg

Eyecom company policy is one of continuing improvement, therefore we reserve the right to change this specification without notice.