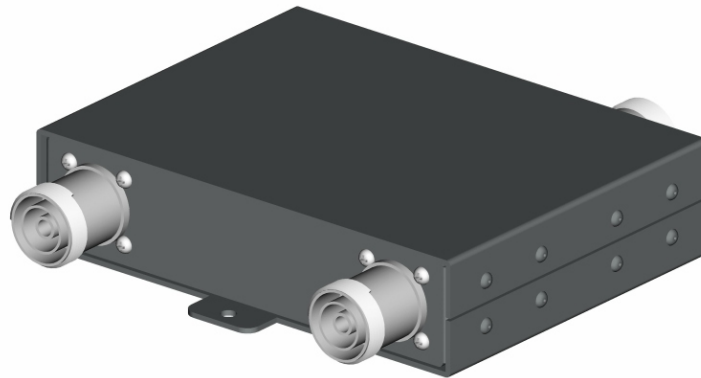


CBC820-2400-3N**ELECTRICAL SPECIFICATIONS**

Frequency range	824-960MHz/1710-2170 MHz and 2400-2500MHz
Return loss	≥ 18 dB
Port to Port isolation	≥ 60 dB, typical 80 dB
Insertion loss (high pass path)	≥ 2400 -2500 MHz <1.7 dB
Insertion loss (low pass path)	820-960 MHz : <0.8 dB; 1710-2170 MHz: <1.5 dB
Max CW power per port	50W
Impedance	50 Ω
Connector type	NF

MECHANICAL SPECIFICATIONS

Dimensions H x W x D	155 x 86 x 20 mm
Weight	0.7kg
Operating temperature	Min 0°C Max +60 °C

FEATURES

Materials: All internal parts corrosion resistant.
All fasteners stainless steel.
Outer casing corrosion resistant aluminium.

Finish: Matt black paint.

