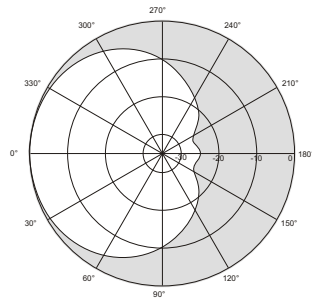
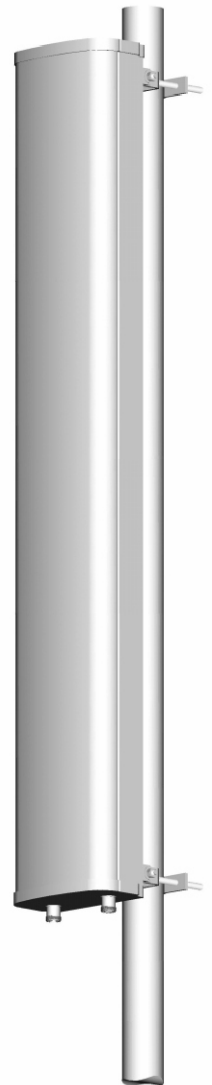
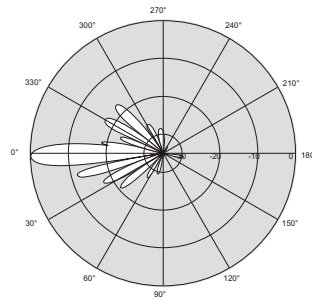


## B A P Panel Antenna Series - Slant Pole

Horizontal Pattern (880MHz)



Vertical Pattern (880MHz)



| Electrical Parameters            |        | Specification              |
|----------------------------------|--------|----------------------------|
| Frequency range                  |        | 824~960MHz                 |
| Gain                             | 824MHz | 15.0dBi                    |
|                                  | 880MHz | 15.2dBi                    |
|                                  | 960MHz | 15.7dBi                    |
| Polarization                     |        | Dual, slant $\pm 45^\circ$ |
| Isolation between ports          |        | $\geq 32$ dB               |
| Vertical plane -3dB beamwidth    |        | 8.2°                       |
| Horizontal plane -3dB beamwidth  |        | 89°                        |
| First upper sidelobe suppression |        | $\geq 18$ dB               |
| Return loss                      |        | $\geq 16$ dB               |
| Front to back ratio              |        | $\geq 25$ dB               |
| Max CW power per port            |        | 500W                       |
| Impedance                        |        | 50Ω                        |
| IMD performance                  |        | $\leq 150$ dBc             |
| Fixed electrical downtilt        |        | 2°                         |
| Lighting protection              |        | DC ground                  |

| Mechanical Parameters                               |  | Specification        |
|---|--|----------------------|
| Connector type                                      |  | DIN 7/16F            |
| Rated wind speed                                    |  | 200km/hr             |
| Dimensions H x W x D                                |  | 2158 x 256 x 137mm   |
| Packed size H x W x D                               |  | 2255 x 400 x 300mm   |
| Weight (less mounting hardware)                     |  | 15.5kg               |
| Operating temperature                               |  | Min -40°C Max +60 °C |
| Radome material                                     |  | FRP                  |
| Mechanical downtilt max. (with adjustable brackets) |  | 12°                  |
| Mounting pole (min/max diameter)                    |  | 50~100mm             |

| Mechanical Parameters |  | Specification |
|-----------------------|--|---------------|
| Materials:            | All internal parts corrosion resistant.<br>All antenna fasteners stainless steel.<br>Bracket assemblies fully galvanized.<br>Radome surface treated for maximum UV protection. |               |
| Mounting:             | Available with either fixed brackets (non-adjustable) or mechanically adjustable bracket assemblies. Please specify when ordering.   |               |
| Grounding:            | Lower bracket assembly DC ground.  |               |

Eyecom company policy is one of continuing improvement, therefore we reserve the right to change this specification without notice.

Mechanical Downtilt Antenna

# BAP890-90S-16D

