

BAP890-1800-65S-17D Non-diplexed Dual Band Antenna

ELECTRICAL SPECIFICATIONS

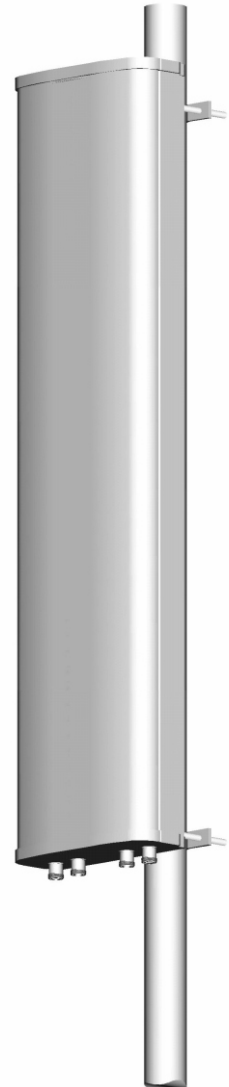
	Low Band	High Band
Frequency range	824-960MHz	1710-1880MHz
Gain	17dBi	16.5dBi
Polarization	Dual, slant $\pm 45^\circ$	Dual, slant $\pm 45^\circ$
Isolation between ports	$\geq 30\text{dB}$	$\geq 32\text{dB}$
Isolation between bands		$\geq 40\text{dB}$
Vertical plane -3dB beamwidth	8.5°	8°
Horizontal plane -3dB beamwidth	65°	65°
First upper sidelobe suppression	20dB	18dB
Return loss	$\geq 16\text{dB}$	$\geq 16\text{dB}$
Front to back ratio	$\geq 30\text{dB}$	$\geq 30\text{dB}$
Max CW power per port		250W
Impedance	50 Ω	50 Ω
IMD performance	$\leq 150\text{dB c}$	$\leq 150\text{dB c}$
Fixed electrical downtilt	2°	4°
Connector type		DIN 7/16F

MECHANICAL SPECIFICATIONS

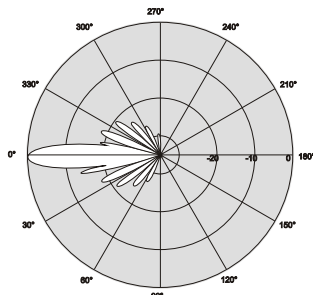
Rated wind speed	200km/hr
Dimensions H x W x D	2158 x 406 x 137mm
Packed size H x W x D	2255 x 550 x 300mm
Weight (with mounting hardware)	22.5kg
Operating temperature	Min -40°C Max $+60^\circ\text{C}$
Radome material	FRP

FEATURES

- Materials:** All internal parts corrosion resistant.
All antenna fasteners stainless steel.
Bracket assemblies fully galvanized.
Radome surface treated for maximum UV protection.
- Mounting:** Available with either fixed type brackets (non-adjustable) or mechanically adjustable bracket assemblies. Please specify when ordering.
- Grounding:** Lower bracket assembly DC ground.



Vertical Pattern (800/900MHz)



Vertical Pattern (1800MHz)

